



Features

- 10.4" (1024x768) Digital TFT LCD
- Aspect Ratio: 4:3
- Input Signal VGA / DVI-D / HDMI 1.3a
- Maximum Support Resolution 1920x1080
- Stereo Audio Amplifier, Output 2W@4Ω Speaker
- Audio Line-In / Line-Out (Optional)
- Touch Screen 4W / 5W Resistive / 2 Points Projected Capacitive Touch (Optional)
- 5 Key Buttons Controls
- UART / RS232 Serial Remote Control (Optional)
- 8 Language OSD Menu
- Light Sensor (Optional)
- LED Backlight
- Wide Operation Voltage +11V ~ +28V

Applications

- Industrial
- Medical Environment
- Instrument Display
- Kiosk
- Security
- Signage
- Office Electronics
- Home Application
- Educate Application

Specifications

LCD	
Panel Size	10.4"
Resolution (Pixels)	1024x768
Color	262K
Luminance w/o TP	400 cd/m ²
Luminance (RTP)	320 cd/m ²
Luminance (PCT)	340 cd/m ²
Contrast Ratio	500
View Angle	75 / 75 / 60 / 80
Backlight Life Time (LED)	30K (Min)
Power Requirement	
Power Input (DC Jack 2.1 ϕ)	+11V ~ +28Vdc
Power Consumption@+12V	6.6 Watts (@Without Amplifier)
Touch Screen	
Resistive Type	USB / RS232 Interface
Resistive Type Support OS	Windows / Linux / DOS / Mac / QNX
Projected Capacitive Touch	USB Interface (2 Points)
Projected Capacitive Touch Support OS	Windows / Android / Linux

Input Signal	
VGA	D-Sub15
DVI	DVI-D
HDMI	1.3a
Audio	
Amplifier	1W@8Ω / 2W@4Ω
Line-In	Stereo Input Phone Jack ϕ 3.5
Controls	
Key	5 Buttons
Serial Remote Control	UART / RS232 (Optional)
Environment	
Operating Temp. w/o TP	-20~+70°C
Storage Temp. w/o TP	-30~+70°C
Operating Temp. 4W RTP	-5~+60°C
Storage Temp. 4W RTP	-30~+70°C
Operating Temp. 5W RTP	-10~+70°C
Storage Temp. 5W RTP	-30~+70°C
Operating Temp. PCT	-20~+70°C
Storage Temp. PCT	-20~+70°C

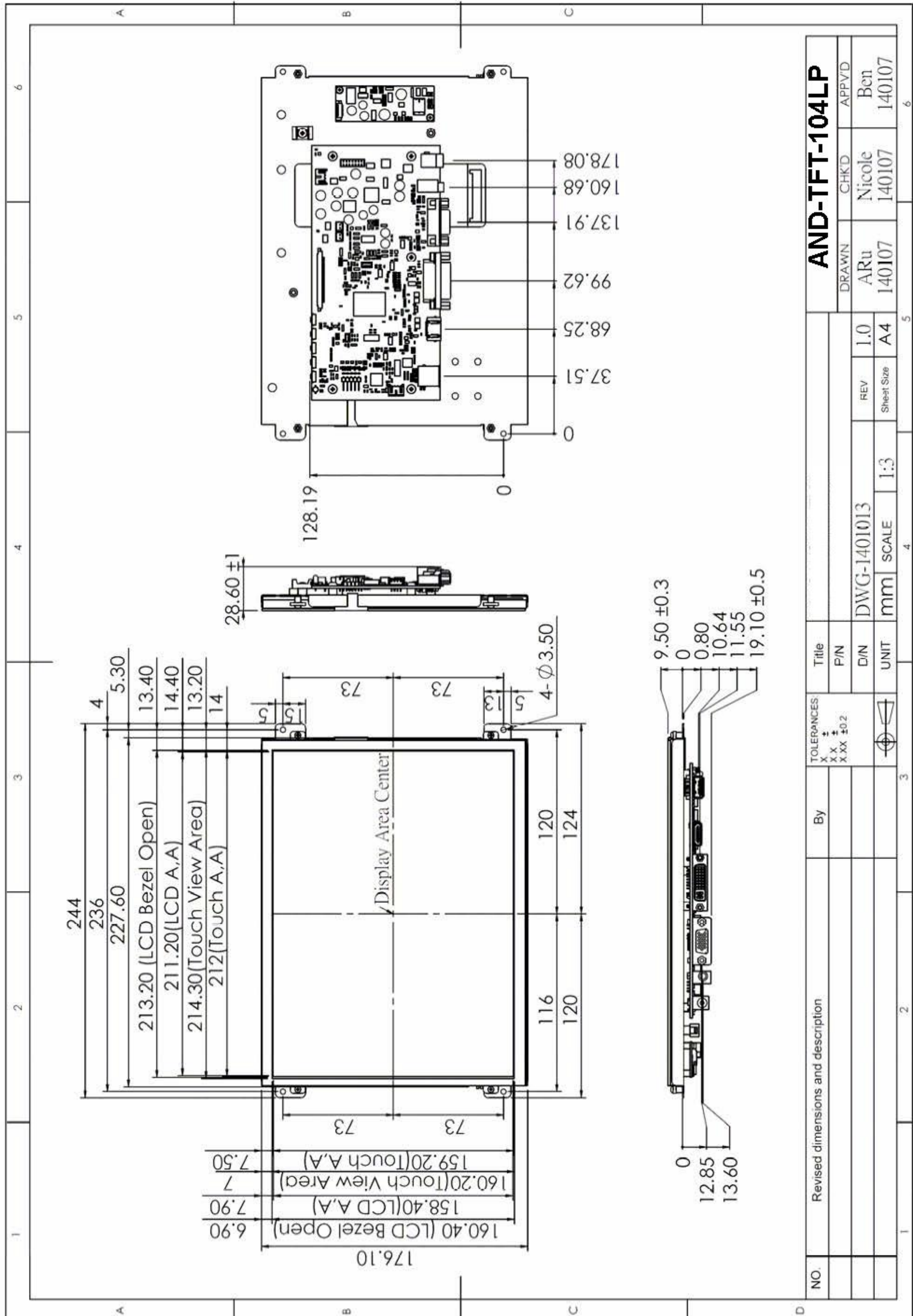
Order Information

Parameter			
Touch Panel Type	-	4W Resistive	4W Resistive
Touch Screen Interface	-	USB	RS232
Audio Amplifier	⊙	⊙	⊙
Audio Line-In	⊙	⊙	⊙
5 Keys	⊙	⊙	⊙
UART Remote Control	⊙	⊙	⊙

Parameter		
Touch Panel Type	5W Resistive	5W Resistive
Touch Screen Interface	USB	RS232
Audio Amplifier	⊙	⊙
Audio Line-In	⊙	⊙
5 Keys	⊙	⊙
UART Remote Control	⊙	⊙

Option Function	
Parameter	<ul style="list-style-type: none"> - Audio Line-Out - RS232 Remote Control - Back Cover - External Key - Light Sensor - Accessories (Refer to Page 5)

Dimension



Accessories (Option)

Before you begin installing the KIT, please make sure that the following materials have been shipped:



A. LASTD12033-FDR



B. LAACD18000-FDR



C. LACABLE068-FDR



D. LACABLE069-FDR



E. LAVGA16000-FDR



F. LAUSB18000-FDR



G. LACABLE045-FDR



H. LACABLE070-FDR



I. LAVCD00002-FDR



J. LASPKR0004-FDR

- A. AC to DC Adapter (L:1500mm, 100-240V_{AC} 50-60Hz to +12V_{DC} @ 3.3A, ϕ 2.1)
- B. Power Cord (L:1800mm, Plug Type B for USA)
- C. HDMI Cable (L:2000mm)
- D. DVI Cable (L:1800mm)
- E. VGA Cable (L:1600mm)
- F. USB Cable (L:1800mm)
- G. RS-232 Cable (L:1800mm, Null Modem)
- H. AUDIO Cable (L:1800mm)
- I. Touch Screen Driver CD Disk / User Manual
- J. Speaker (2.5W @ 4 Ω L:400mm *2 Pieces)